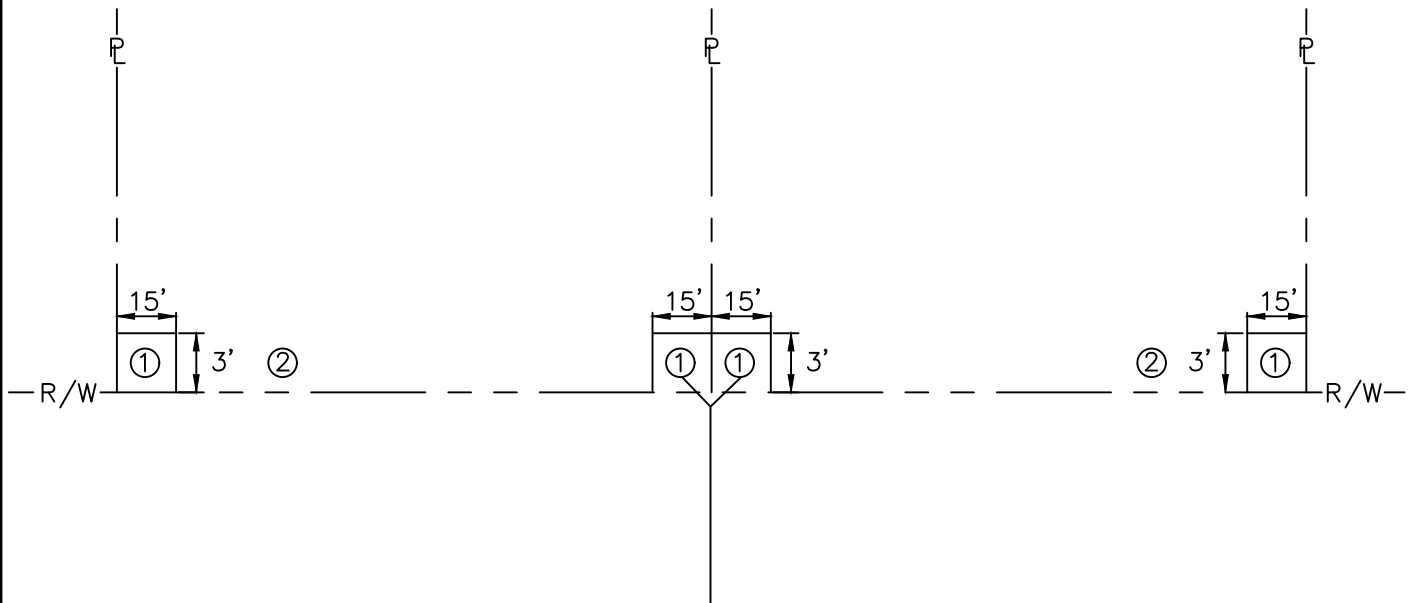


GENERAL POLICY


WHERE COST JUSTIFIED AND OPERATIONALLY FEASIBLE, IT IS THE GENERAL POLICY OF THE CITY TO PROVIDE WATER AND SEWER SERVICE FROM THE STREET SIDE OF A PIECE OF PROPERTY. DEPENDING ON FACTORS SUCH AS LOCATION OF EXISTING SUPPLY SOURCE FACILITIES, REAR OR SIDE LOT LINE SUPPLY MAY BE AUTHORIZED, BUT ONLY WITH PRIOR APPROVAL FROM THE CITY.



- ① THE PREFERRED POINT OF CONNECTION TO THE CITY SEWER LATERAL, AREA ① , SHALL BE LOCATED IN THE CORNER OF THE PROPERTY SELECTED BY THE CITY AS THE BEST LOCATION FOR THE LATERAL. EVERY EFFORT WILL BE MADE TO SELECT THE CORNER WHERE TWO LATERALS CAN BE CONNECTED IN A "Y" CONFIGURATION AS SHOWN.
- ② IF PHYSICAL BARRIERS OR OTHER OBSTACLES PREVENT THE CONNECTION OF THE BUILDING SERVICE LINE TO THE CITY SEWER LATERAL, WITHIN AREA ① , THE CITY ENGINEERING DEPARTMENT MAY AUTHORIZE THE CONNECTION ALONG THE PORTION OF THE R/W LINE MARKED AREA ② .

NOTES:

1. HORIZONTAL SEPARATION OF WATER AND WASTEWATER SERVICES SHOULD BE A MINIMUM OF 10 FEET.
2. THE WASTEWATER LATERAL SHALL BE LOCATED WITHIN RIGHT-OF-WAY AND TERMINATE AT THE PROPERTY LINE.
3. THE CITY SHALL BE RESPONSIBLE FOR THE MAINTENANCE AND REPAIR OF THE WASTE- WATER LATERAL WITHIN THE EASEMENT OR RIGHT-OF-WAY, UP TO THE POINT OF CON- NECTION.

	STANDARD UTILITY DETAILS City of Stuart Utilities & Engineering Department	WASTEWATER SERVICE PLACEMENT POLICY	
	121 S.W. Flagler Avenue, Stuart, Florida 34994	DATE: OCTOBER 2021 FILE NAME: 2021 COS Std Details.dwg	SHEET NUMBER 36